

Prepared by David White

Develop CENTS, LLC



Synology NAS Instructions

Mapping a Network Drive in Windows

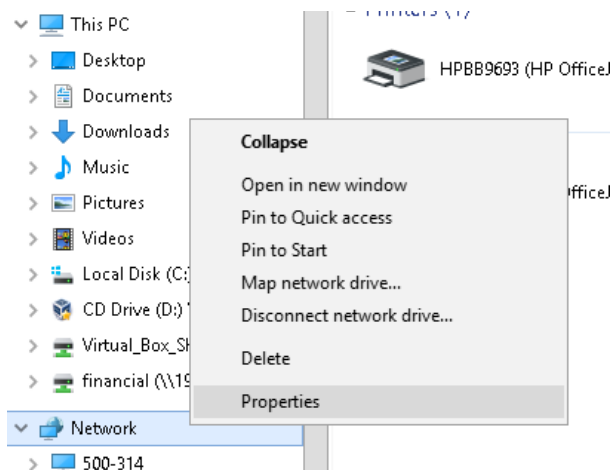
Contact:

<https://developcents.com>
david@developcents.com
423-693-4234

Introduction

These instructions aren't specifically related to operating your Synology NAS. Instead, this document is intended to help you connect your Windows computer to a Shared Folder on your Synology NAS in the form of a Mapped Drive.

1. Go to Start → This PC (for Windows 7, click “Computer” instead of “This PC”)
2. Right click on “Network” and click “Map Network Drive”



3. Type in the following, replacing {ip-address} with your Synology's IP address, and where “Folder Name” is the name of the Shared Folder you want to map, and then click Finish.

\\{ip-address}\Folder Name

(There can be multiple Shared Folders on a Synology NAS. If one of your root Shared Folders is named “Data” and your Synology NAS has the IP address of 192.168.1.2, then you would type: \\192.168.1.1\Data and then click Finish)

4. You may be prompted for your Synology NAS credentials (username & password).

Synology NAS Instructions

Prepared by: Develop CENTS, LLC (<https://developcents.com>)